

A PLAT OF THE VILLAS AT SUNSET TRACE

BEING PLAT NO. 16 OF MARTIN DOWNS, A P.U.D.
LYING IN SECTION 13, TWP. 38 S., RGE. 40 E. MARTIN COUNTY, FLORIDA

I, Louise V. Isaacs, Clerk of the Circuit Court of Martin County, Florida, hereby certify that this plat was filed for record in Plat Book 10, Page 12, Martin County, Florida, public records, this _____ day of _____, 1985

LOUISE V. ISAACS, CLERK
CIRCUIT COURT
MARTIN COUNTY, FLORIDA

BY: _____
Deputy Clerk

File No. _____

SHEET 2 OF 2 SHEETS

Hutcheon Engineers
CIVIL ENGINEERS & SURVEYORS

WEST PALM BEACH

BELLE GLADE

STUART

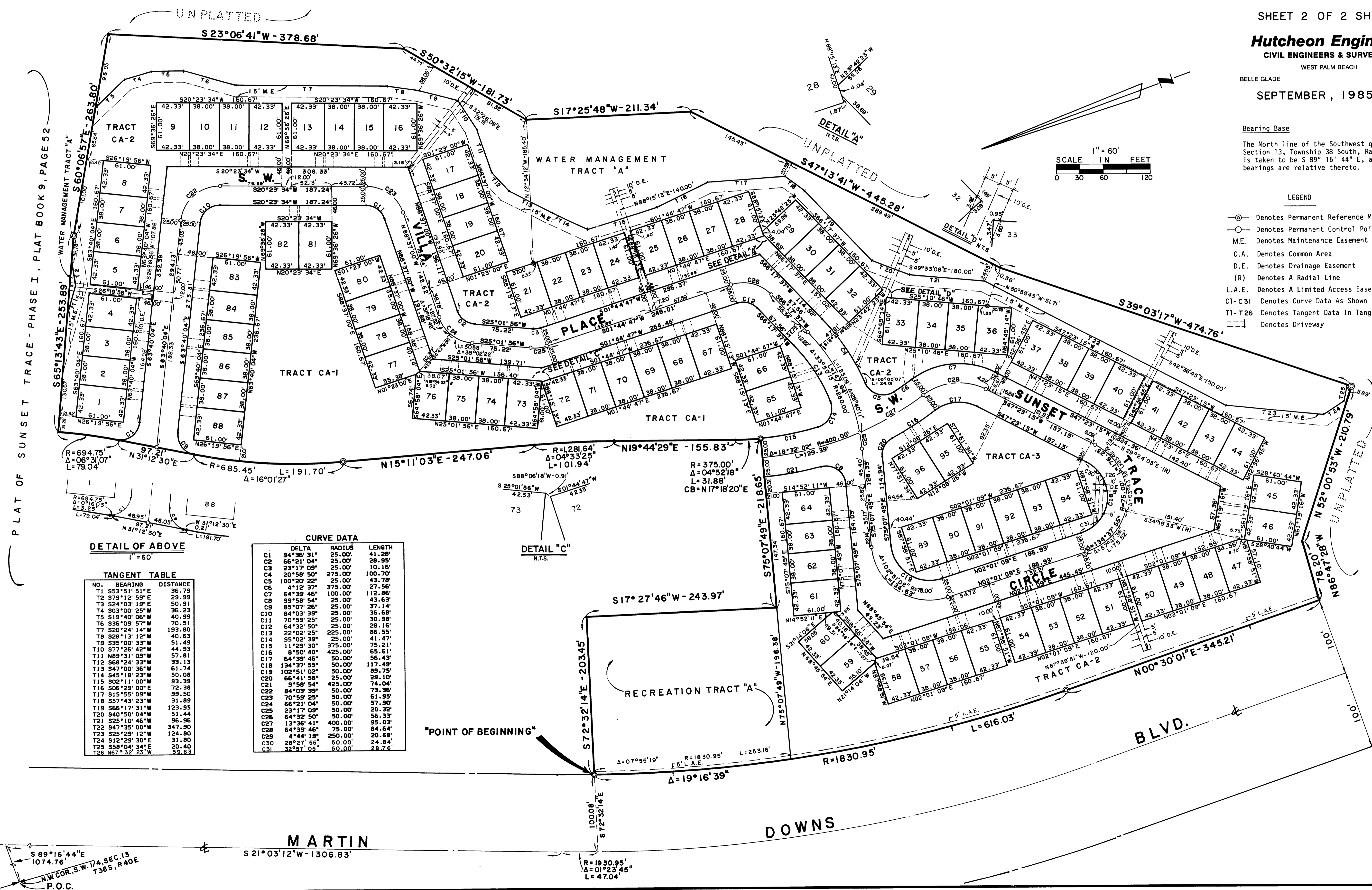
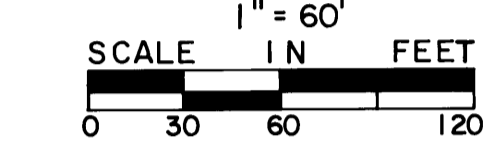
SEPTEMBER, 1985

Bearing Base

The North line of the Southwest quarter of Section 13, Township 38 South, Range 40 East, is taken to be S 89° 16' 44" E, and all other bearings are relative thereto.

LEGEND

- ⊙ Denotes Permanent Reference Monument (P.R.M.)
- Denotes Permanent Control Point (P.C.P.)
- Denotes Maintenance Easement
- C.A. Denotes Common Area
- D.E. Denotes Drainage Easement
- (R) Denotes A Radial Line
- L.A.E. Denotes A Limited Access Easement
- C1-C31 Denotes Curve Data As Shown In Curve Table
- T1-T26 Denotes Tangent Data In Tangent Table
- Denotes Driveway



DETAIL OF ABOVE
1" = 60'

TANGENT TABLE

NO.	BEARING	DISTANCE
T1	S53°51'51"E	36.79
T2	T79°12'59"E	29.99
T3	S24°03'19"E	50.91
T4	S03°04'25"W	36.23
T5	S19°40'06"W	40.99
T6	S36°09'57"W	70.51
T7	S20°24'14"W	193.80
T8	S28°13'12"W	40.63
T9	S35°00'33"W	51.49
T10	S77°26'42"W	44.93
T11	N89°31'09"E	57.81
T12	S68°04'33"W	33.13
T13	S47°00'36"W	61.74
T14	S45°18'23"W	50.08
T15	S02°11'00"W	93.38
T16	S06°28'00"E	72.38
T17	S15°55'09"W	99.50
T18	S57°43'23"W	31.89
T19	S66°17'31"W	123.95
T20	S40°50'04"W	51.44
T21	S25°10'46"W	96.96
T22	S47°35'00"W	347.90
T23	S25°29'12"W	124.80
T24	S12°29'30"E	31.80
T25	S58°04'34"E	20.40
T26	N67°32'23"W	59.63

CURVE DATA

C1	DELTA	RADIUS	LENGTH
C1	94°36'31"	25.00'	41.28'
C2	66°21'04"	25.00'	28.95'
C3	23°17'09"	25.00'	10.16'
C4	20°58'09"	275.00'	100.70'
C5	100°20'22"	25.00'	43.78'
C6	4°12'37"	375.00'	27.56'
C7	84°39'46"	100.00'	112.86'
C8	39°58'54"	25.00'	43.63'
C9	85°07'26"	25.00'	37.14'
C10	84°03'39"	25.00'	36.68'
C11	70°58'25"	25.00'	30.98'
C12	64°32'50"	25.00'	28.16'
C13	22°02'25"	225.00'	86.55'
C14	95°02'39"	25.00'	41.47'
C15	11°29'30"	375.00'	75.21'
C16	8°50'40"	425.00'	65.61'
C17	64°39'46"	50.00'	56.43'
C18	134°37'53"	50.00'	117.49'
C19	102°51'02"	50.00'	89.75'
C20	66°41'58"	25.00'	29.10'
C21	9°58'54"	425.00'	74.04'
C22	84°03'39"	50.00'	73.26'
C23	70°58'25"	50.00'	61.95'
C24	66°21'04"	50.00'	57.90'
C25	23°17'09"	50.00'	20.32'
C26	64°32'50"	50.00'	56.33'
C27	13°36'41"	400.00'	95.03'
C28	64°39'46"	75.00'	84.64'
C29	4°44'19"	250.00'	20.68'
C30	28°27'55"	50.00'	74.84'
C31	32°57'02"	50.00'	28.78'

MARTIN

DOWNS

BLVD.

